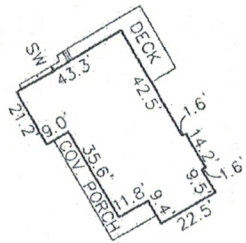


NOTES:

1. THIS PLAT WAS PREPARED WITHOUT THE BENEFIT OF A TILE REPORT AND MAY BE SUBJECT TO EASEMENTS OF RECORD WHICH ARE NOT SHOWN ON THIS PLAT.

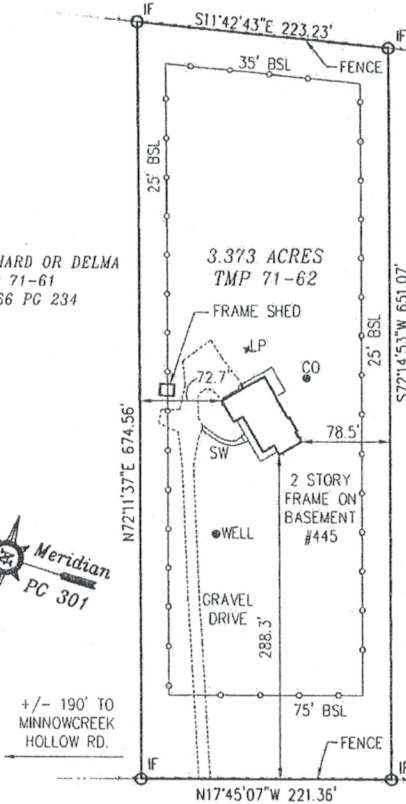
FNM PROPERTIES, LLC
 TMP 71-34
 DB 3626 PG 362



HOUSE DETAIL
 SCALE: 1"=40'

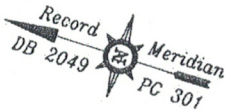
JAMES, RICHARD OR DELMA
 TMP 71-61
 DD 2366 PG 234

CONNELL, JAMES OR CHRISTINE
 TMP 71-63
 DB 2084 PG 284



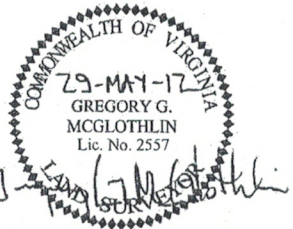
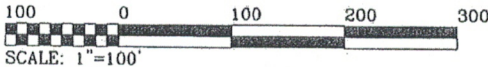
LEGEND

- BSL BUILDING SETBACK LINE
- IF IRON FOUND
- IS IRON SET
- GM GAS METER
- HP HEAT PUMP
- PP POWER POLE
- CO SAN. CLEANOUT
- LP LIGHTPOLE
- SW CONCRETE SIDEWALK

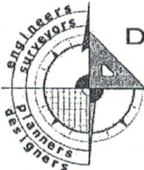


+/- 190' TO
 MINNOWCREEK
 HOLLOW RD.

BURCHS CREEK ROAD
 (STATE ROUTE 689)



L:\Projects\WORKSHT\TABLE\TM-71-62-95.DWG



**Dominion
 Engineering**

172 South Parkways Drive
 Charlotteville, VA 22911
 434.979.0121 (p)
 434.979.1601 (f)
 Doreneconng.com

PHYSICAL IMPROVEMENT SURVEY
 445 BURCHS CREEK ROAD
 TMP 71-62

SAMUEL MILLER MAGISTERIAL DISTRICT
 COUNTY OF ALBEMARLE, VIRGINIA

SHEET 1 of 1 DATE: MAY 29, 2012